

April 12, 2016

New Residential Water Meter Pit Specifications



Utility Division

Nathan W. Coey
Utility Director

Dear Installer,

Please allow this letter to serve as formal notice regarding new residential water service meter pit specifications. Effective immediately the City of Pataskala Utility Department will no longer provide the necessary meter pit material for new residential installations. To date, the Utility Department has provided the material as a convenience to the contractor and builder as we initiated the residential meter pit program. It is in the best interest of the installer to provide the meter pit material as a part of their purchasing and installation process to better stream line the end product to the builder. The Utility Department will continue to provide the meter and remote reading device for installation in the pit as a part of the capacity fee structure. It will continue to be the responsibility of the contractor to install the meter pit and lid to an elevation conducive for finished grade.

Approved meter pit material (with part numbers) can be provided from the following vendors:

Dreier and Maller, Inc

(P) 800.659.3070

- ADS meter pit 18" x 36"
- Mueller angle valve, B-24258 (5/8" x 3/4" x 3/4)
- Mueller dual check valve, H-14462-A
- Meter pit cover, PROPS500 (lid must have touch pad hole)
 - The above parts require installer assembly to specific needs at the site.

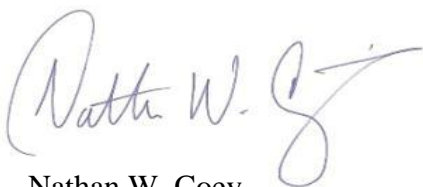
HD Supply

(P) 614.475.4376 or 614.348.5742

- 5/8 x 3/4 Mueller Meter Pit 203RCS1846FVBN ("EZ Riser Setter")
 - The above pits are pre-fabricated and ready for installation at the site.
- Meter pit cover, H10816-99099 (lid must have touch pad hole)
- 2 compression fittings 74754T
- 1 inch meter pits are available based on capacity fees

Specification sheets are attached to this document as provided by the approved vendors.

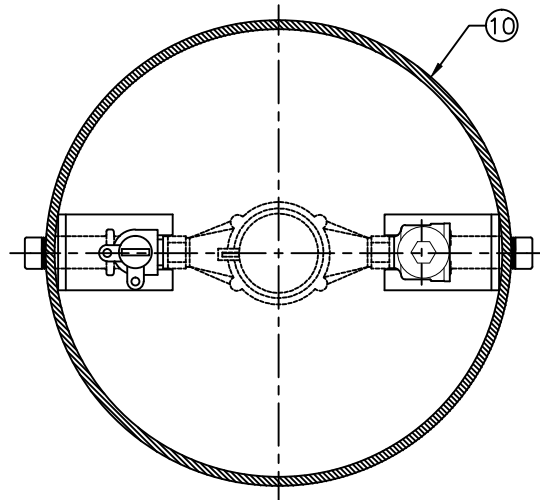
Highest Regards,



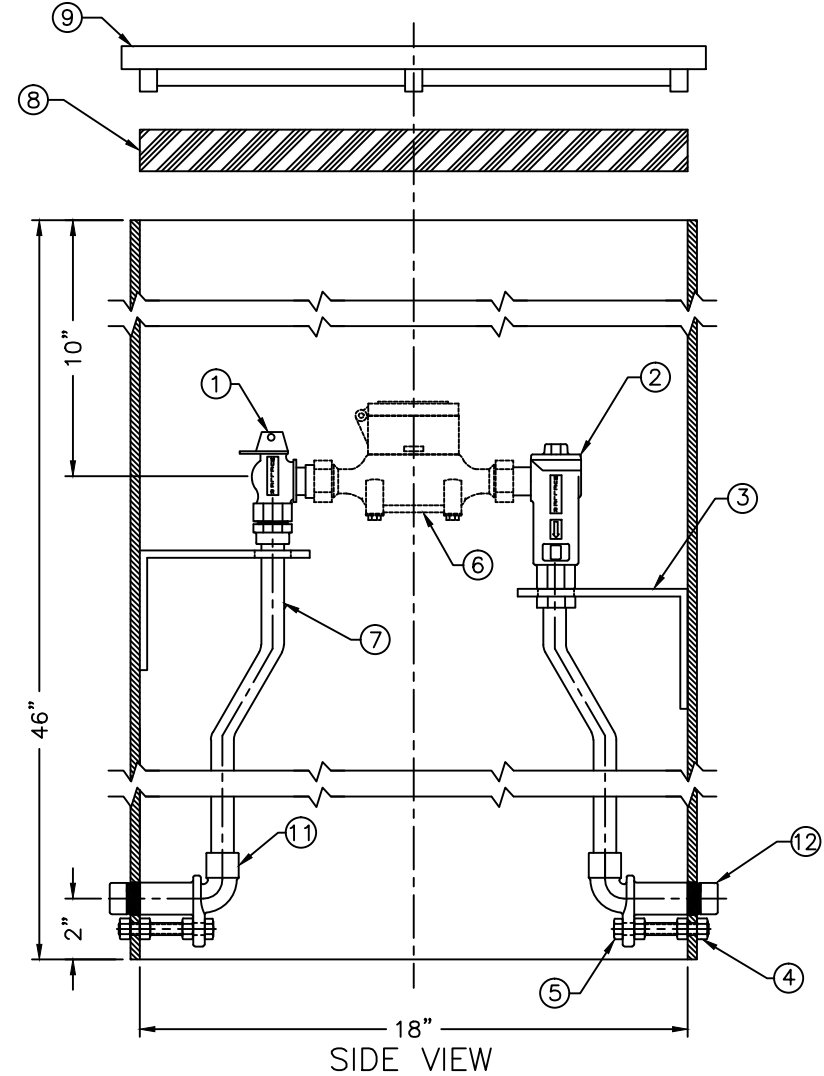
Nathan W. Coey
Utility Director
740-927-4134
ncoey@ci.pataskala.oh.us

ITEM	DESCRIPTION	REQ'D
1	3/4" FULLPORT ANGLE BALL VALVE	1
2	3/4" VERTICAL CHECK VALVE	1
3	STABILIZING BRACKET	2
4	HEX NUT	6
5	HEX BOLT	2
6	METER JUMPER	1
7	RISER SUB-ASSEMBLY	1
8	INSULATING PAD	1
9	LID (FLAT LID SHOWN)	1
10	18" SHELL SUB-ASSEMBLY	1
11	90° ELBOW	2
12	CAPLUG	2

* OPTIONAL



TOP VIEW



SIDE VIEW

NOTE: METER NOT INCLUDED

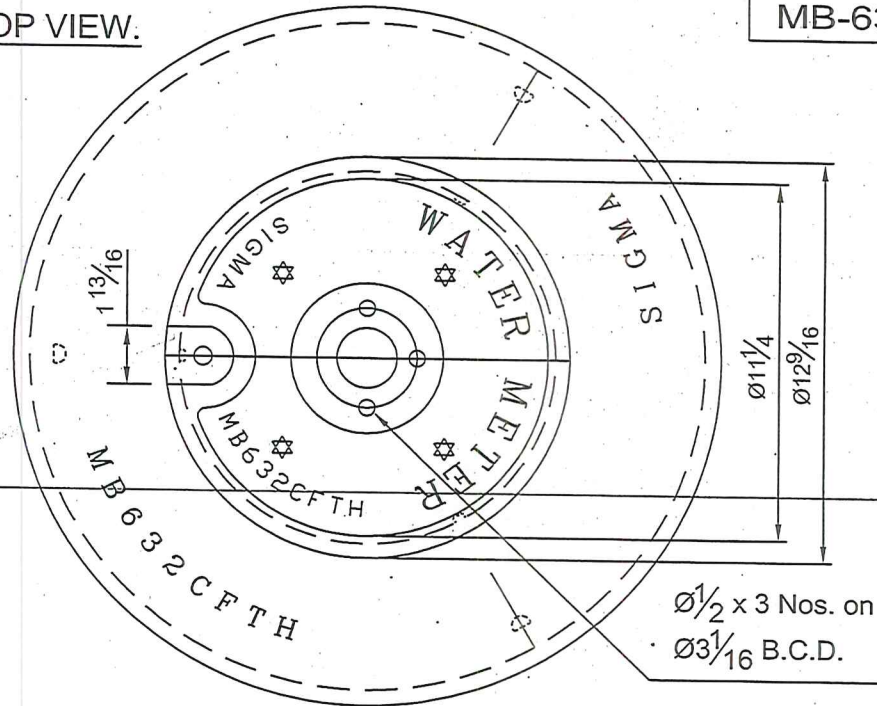
DRFT'R	MC	3-31-09	THIRD ANGLE PROJECTION 	REF. NO.	SCALE
CHK'R	MC	3-31-09			NONE
E.O. NUMBER				STOCK No.	
			DESCR.	REV.	NUMBER
			RIGID COPPER SINGLE METER PIT	203RCS1846FVBN	SHEET 1 OF 1

203RCS1846FVBN

REV.	DESCRIPTION	REF.	DRFT'R	CHK'R	APP	DATE
------	-------------	------	--------	-------	-----	------

DRG. NO:
MB-632CFTH.

ASSEMBLY TOP VIEW.



Ø1/2 x 3 Nos. on
Ø3 1/16 B.C.D.

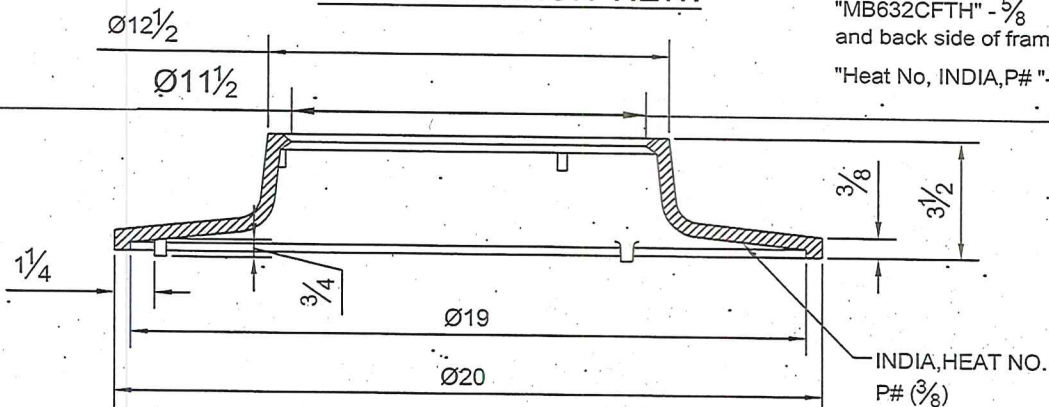
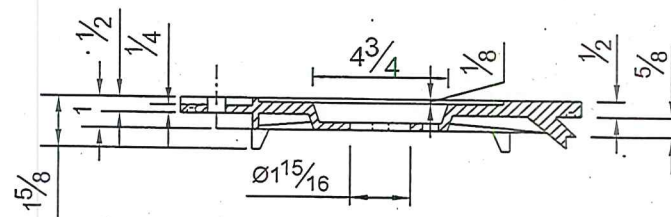
Marking on Top of Cover -

"WATER METER" - 1 1/4.
"SIGMA" - 3/4
"MB632CFTH" - 1/2
and back side of cover
"MB632CFTH, Heat No,
INDIA,P# " - 3/8.

Marking on Top of Frame -

"SIGMA" - 1"
"MB632CFTH" - 5/8
and back side of frame
"Heat No, INDIA,P# " - 3/8.

COVER SECTION VIEW.



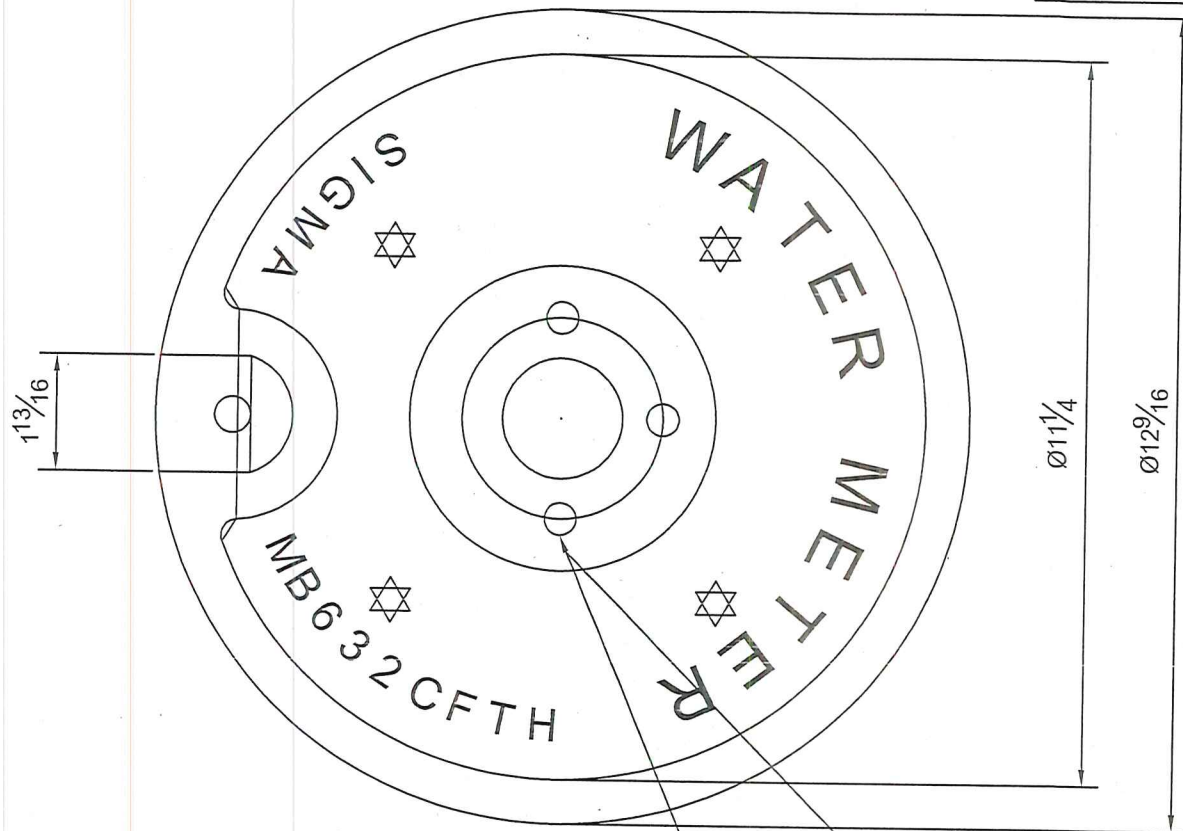
BODY SECTION VIEW.

COVER:- 11.4 LBS.
FRAME:- 17.6 LBS

ALL DIMENSIONS ARE IN INCH.

MATERIAL: Grey Iron ASTM A48 Class 30		DESCRIPTION: METER BOX FRAME AND TOUCH HOLE COVER.	
COATING: ENAMEL PAINT.		WEIGHT: 29 LBS (SET).	APPVD. ON
DRN. BY. B. RAHUL. 17.11.2001.	CHECKED BY: R. B. B.	ISSUED DRG.	REVISION. 1) "RUSSCO" changed to "SIGMA" vide mail gf1 @ sigmaco.com dated 11.17.2005

DRG. NO:
MB-6321CFTH.

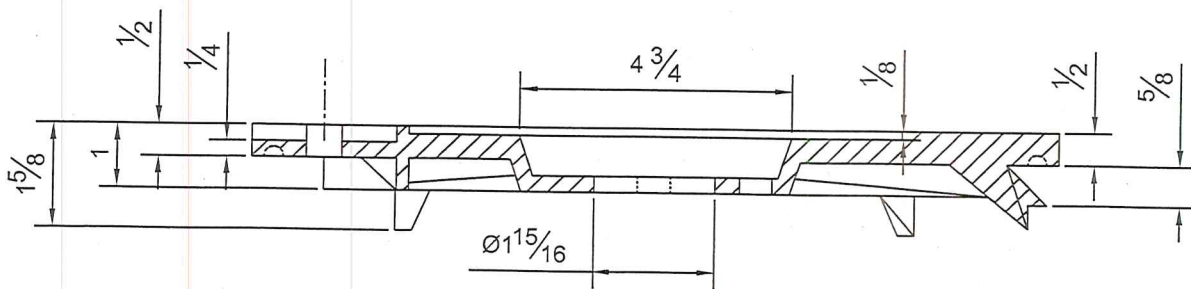


TOP VIEW

$\emptyset 1/2 \times 3$ Nos. on
 $\emptyset 3 1/16$ B.C.D.

Marking on Top of Cover -

"WATER METER" - $1 1/4$.
"SIGMA" - $3/4$
"MB632CFTH" - $1/2$
and back side of cover
"MB632CFTH, Heat No,
INDIA,P# " - $3/8$.



SECTION VIEW.

ALL DIMENSIONS ARE IN INCH.

MATERIAL: Grey Iron ASTM A48 Class 30		DESCRIPTION: COVER FOR 18" METER BOX MB 632CFTH MARKED " SIGMA, WATER METER " WITH TOUCH TONE HOLE.	
COATING: ENAMEL PAINT.		WEIGHT: 11.40 LBS	APPVD. ON
DRN. BY. B.RAHUL. 17.11.2001.	CHECKED BY: R. B. B.	ISSUED DRG.	REVISION. 1) "RUSSCO" changed to "SIGMA" vide mail gf1 @ sigmaco.com dated 11.17.2005