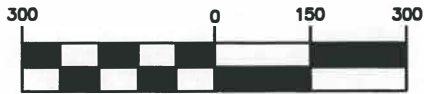


# 4.85± Acre Rezoning Exhibit

Lot 12, 4th Quarter, Township 1, Range 15  
 United States Military District  
 City of Pataskala, Licking County, Ohio

- (A) Grand Communities, LTD  
 P.N. 063-30769200043  
 I.N. 201803290005860  
 19.047 Acres (remainder)
- (B) Tri H Farms, LLC  
 P.N. 6314077800000  
 I.N. 201601150000839  
 149.513 Acres
- (C) SETTLEMENT AT PATASKALA  
 PHASE 3, PART 3  
 I.N. 201610130022454
- (D) SETTLEMENT AT PATASKALA  
 PHASE 3, PART 2  
 I.N. 200608240024662
- (E) SETTLEMENT AT PATASKALA  
 PHASE 3, PART 1  
 I.N. 200510070031920

## GRAPHIC SCALE

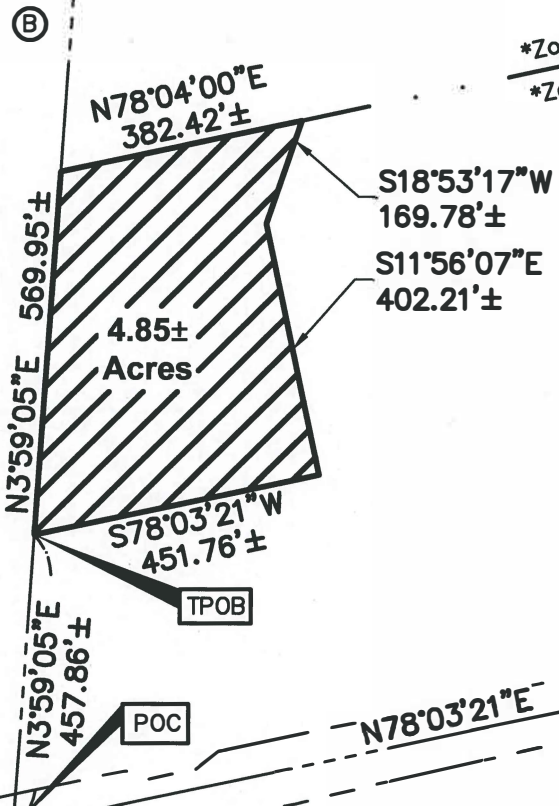


( IN FEET )  
 1 inch = 300 ft.

Bearings are based on the Ohio State Plane Coordinate System, South Zone, NAD83 (NSRS2007). Said bearings were derived from GPS observation and determine a portion of the centerline of Broad Street (S.R. 16) having a bearing of N78°03'21"E.

P & G Pataskala, Ltd.  
 P.N. 064-30769200000  
 O.R. 764, Pg. 644  
 183.658 Acres (remainder)

\*Zoning Designation: R-10  
 \*Zoning Designation: GB

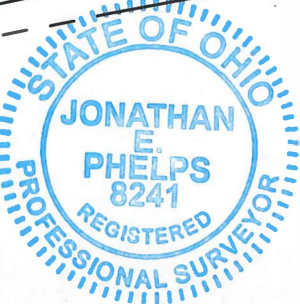


Broad Street (S.R. 16)  
 ODOT R/W Plan LIC-16-0.00-3.60

John Reese Parkway  
 P.B. 16, Pg. 72

LEGEND  
 \*City of Pataskala Zoning Map dated: June 27, 2017

DRAWN BY: JEP	JOB NO.: 18-0005-644
DATE: 11/08/2018	CHECKED BY: JEP



This Survey is based on existing records from Licking County.

ADVANCED CIVIL DESIGN, INC.

Jonathan E. Phelps Date  
 Reg. No. 8241



422 Beecher Road  
 Gahanna, Ohio 43230  
 ph 614.428.7750  
 fax 614.428.7755