

OAK MEADOW MULTI-FAMILY
TOWNHOUSE PROJECT
PATASKALA, OH

PROJECT DATA

- 10 UNITS

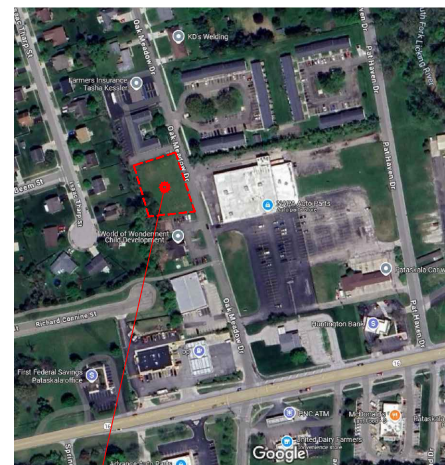
AREAS

- LOWER FLOOR A/C (ENTRY / STAIR / OFFICE) 350 SF
- SECOND FLOOR (LIVING/KITCHEN) 500 SF
- THIRD FLOOR (2-BEDROOMS) 500 SF

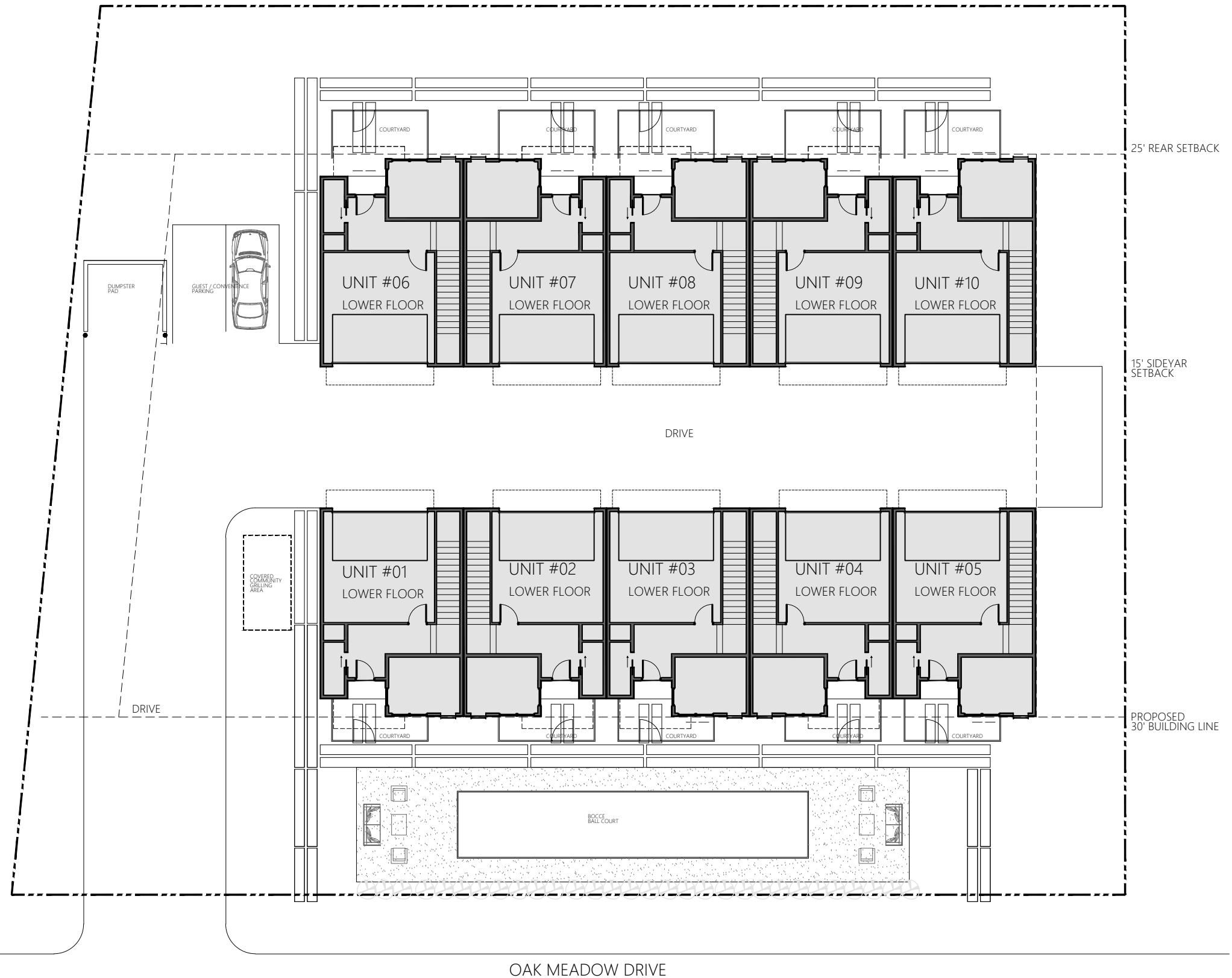
TOTAL PER UNIT 1,350 SF

AMENITIES

- 2-CAR GARAGE PER UNIT
- COMMON AREA GRILLING AREA
- PRIVATE COURTYARD / DOG AREA (42" FENCE W/ GATE)
- BOCCIE BALL COURT W/ SITTING AREAS
- GUEST PARKING (2)



SITE



01
CONCEPT SITE PLAN #1

**OAK MEADOW MULTI-FAMILY
TOWNHOUSE PROJECT**
PATASKALA, OH

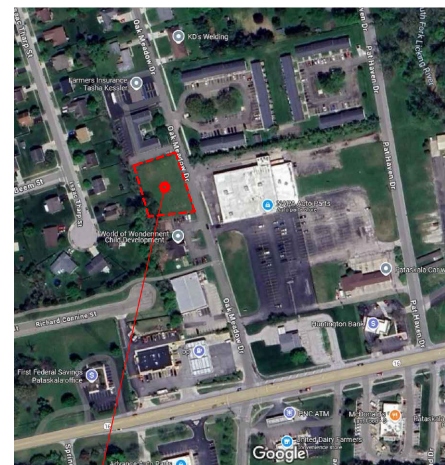
PROJECT DATA

- 10 UNITS TOTAL
- UNITS #1 / #6
• 2 BEDROOM - SINGLE STORY 1,200 SF
- UNITS #2 / #5
3-STORY / 3 BEDROOM 1,450 SF
- UNITS #3 / #4
2-STORY / 2 BEDROOM 1,200 SF
- UNITS #7 / #8 / #9 / #10
2-STORY / 2 BEDROOM 1,150 SF

TOTAL PROJECT = 12,300 SF

AMENITIES

- 22 PARKING
- COMMON AREA GRILLING COURTYARD / BEER GARDEN



SITE

